


## Station Firmware Upgrade – 5.74



Firmware **5.74** has now been released for BS7 and BS8 stations (these include all SPORTident stations with an LCD display). The new version increases the performance of SPORTident stations by improving the data transfer processes and also manages the power consumption correctly in start/finish/clear/check mode when stations are used with SI-Cards 8 and 9. The version of firmware in a station can be checked by dipping the Service/Off key in the station and viewing the settings on the station's LCD display or by reading the station using the SI-Config software.

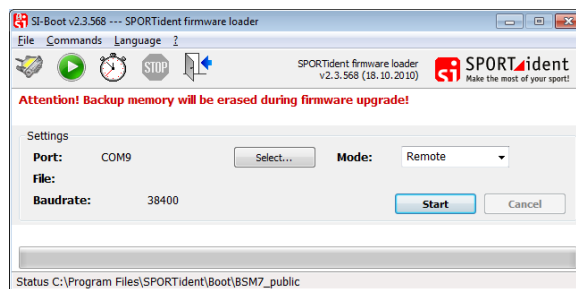
**It is important that you now upgrade the Firmware in all your stations (including Master Stations and Printout Stations) to 5.74 to minimise the maintenance of the equipment. Use the following procedure:**

### Setting up

- You must upgrade or install the latest version of the SiBoot software (version 2.6.574).
- Download SiBoot v2.6.574 from our website: <http://www.sportident.co.uk/downloads>.
- Connect a Master Station or Printout Station to the computer
- Open the SiBoot program and select the correct Port by clicking the  button

### Upgrading Firmware

1. Ensure the Program is set to **Remote** to upgrade a Slaved station or **Direct** to upgrade the Masterstation attached to the computer.
2. To upgrade a slaved station, turn the station on using the Service/Off Key and mate it in the usual way with the Master/Printout station.
3. Click on either Start Update button  or . Please note that the backup memory in the station will be cleared during the upgrade.
4. The program will automatically select the correct upgrade for the station. Contact us if the upgrade is **NOT** to version 5.74.
5. The end of the update process is signalled by two beeps.
6. Click OK and then **PLEASE WAIT** for a few seconds while the station clock is set to your PC Time. The Firmware Upgrade is then complete and you can remove a slaved station.
7. The original station settings will be maintained but if **you remove a slaved station** before the station clock is set to your PC time, the clock will be reset to 00:00:00.

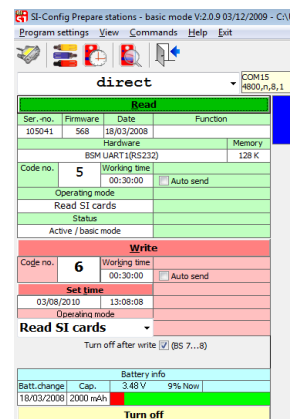


SiBoot Software

### Final Stage

If you are using an RS232 Master station or a Print Station with SiBoot, the baud rate (speed of data transfer) will have been changed to 38,400 baud during the firmware upgrade in order to accelerate the process. These stations are normally used at 4,800 baud. The SiBoot software will reset the baud rate back to original speed. However, if any of the upgrades have been interrupted this may not happen correctly.

When you have finished upgrading all your stations, please close SiBoot and open Si-Config. Ensure the programme is set to 'Direct' and then 'Read' the station. The box beside the 'Direct/Remote' option will show the baud rate. If necessary, reset it to correct speed by using the 'Commands' menu.



Si-Config Software

