

SiTiming Installation Notes (v2)

STEP 1 - SiTiming

SiTiming can be downloaded from <http://www.sportident.co.uk/sitiming>

Once downloaded, run the setup file. Please just follow the default settings.

SiTiming requires Microsoft .NET 4 Framework to run. On newer computers this will already be installed (sometimes showing as .NET 4.5). You may need to install .NET 4 on old Windows XP computers. If you can start SiTiming then .NET 4 is installed!

Open SiTiming

STEP 2 – Database

SiTiming requires Microsoft SQL Server to store its data in. The database software only needs to be installed on one computer on your event network – we recommend you choose the most powerful one which will become the server. However, to provide extra resilience if one of your laptops fails, we would suggest that you install it on all computers that you will use with SiTiming.

If you have previously installed SQL Server on the computer for use with AutoDownload you do not need to re-install it. Go to Step 2.3 below.

Microsoft (like ourselves) test their products on computers that have the latest Windows updates applied and therefore may introduce features that are incompatible with “out of date” computers and in worse case cause them to crash.

PLEASE MAKE SURE YOU ARE UP TO DATE WITH WINDOWS UPDATES

Warning: Do not install SQL Server on a Windows XP computer that is on Service Pack 2. You MUST upgrade to Windows XP Service Pack 3 first.

VERY IMPORTANT: In rare situations, you may already have programs on the computer that use components of SQL Server. This may result in the failure of the installation described below. If for example "Microsoft SQL Server Native Client" is already installed on your computer the installation will fail.

Uninstall the SQL Server components before installing SQL Server Express and they will be reinstalled as part of this process.

2.1 Downloading the Database Installation File

Before you start, it is important to know if the Operating System on your computer is 64 bit or 32 bit. All laptops delivered new with Windows 8 should be 64 bit and most laptops manufactured since 2011 will be 64 bit. The **System** option in Control Panel provides a screen of information with details confirming a 64 bit or 32 bit Operating System.

Now pick the most appropriate version of **Microsoft® SQL Server® - Express Edition** for your computer. SiTiming will also work with the full Microsoft SQL Server application.

WARNING: YOU MUST NOT CHOOSE THE RUN OPTION for the SQLEXPRESS.....exe file detailed below while you are downloading it. The file MUST be saved on your computer and MUST be installed later by selecting the file from within the SiTiming file browser screen.

Microsoft® SQL Server® 2012 - Express Edition

We recommend this for **Windows 7, 8 and 10** computers. It can be downloaded from:

<http://www.microsoft.com/en-gb/download/details.aspx?id=29062>

Then click **DOWNLOAD** and select either:

- **ENU\x64\SQLEXPRESS_x64_ENU.exe** (132.3MB) if you have a 64 bit computer
or
- **ENU\x86\SQLEXPRESS_x86_ENU.exe** (116.7MB) if you have a 32 bit computer

Microsoft® SQL Server® 2005 – Express Edition

We recommend this for **Windows Vista and Windows XP computers.**

It can be downloaded from <http://www.microsoft.com/en-us/download/details.aspx?id=184>

Then click **DOWNLOAD** and select either:

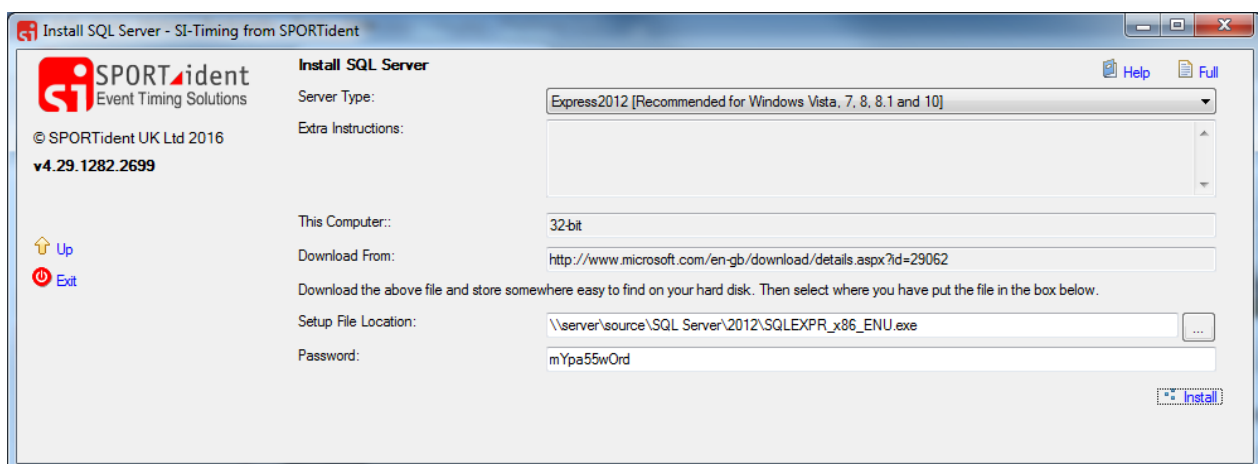
- **SQLEXPRESS32.EXE** (35.9Mb file) if you have a 32 bit computer
or
- **SQLEXPRESS.EXE** (54.8Mb file) if you have a 64 bit computer

2.2 Installing the database

Warning: Windows 8 and Windows 8.1 – SQL Server will not install correctly if the Computer Name and the Windows User Name are the same (no, we don't know why either)! You must either change the Computer's Name or use a different Windows User before installing the software. If you change the computer's name then we suggest that you then reboot.

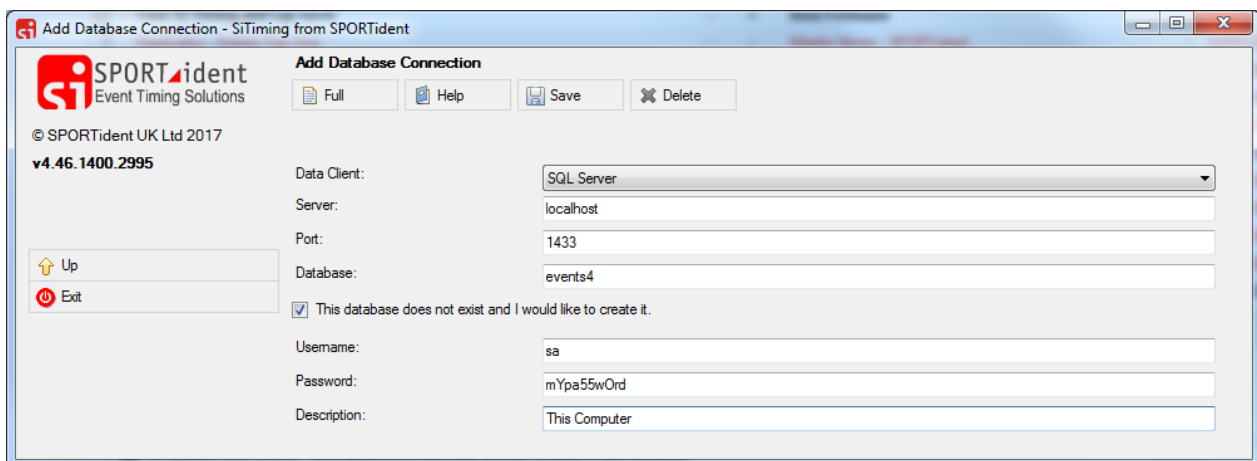
Warning: Once you have downloaded the SQL Server setup file you should disconnect from your Wifi / the internet. If you do not disconnect the SQL Server installation process checks for software updates and this causes the installation to fail.

1. Start SiTiming
2. Click '**Install SQL Server**' in the menu
3. Select
 - Server Type of **Express 2012** or **Express 2005** as appropriate.
 - Browse to select the SQL EXE file you have downloaded and saved on your computer
 - Enter a very simple password of alphanumeric characters. You **MUST NOT** leave this field blank. Don't make the password too difficult to remember and take infinite care as you type it in as you only get one chance to specify it. It is case dependent so be aware if CAPS LOCK is on. To avoid difficulties networking all your computers together, this same password **MUST** be used when you install SQL Server on each computer that will use SiTiming. If SQL Server and SiTiming are already installed on other computers that you may wish to network with this computer in the future, use the same password that you used when you setup the other computers.
4. Click '**Install**'

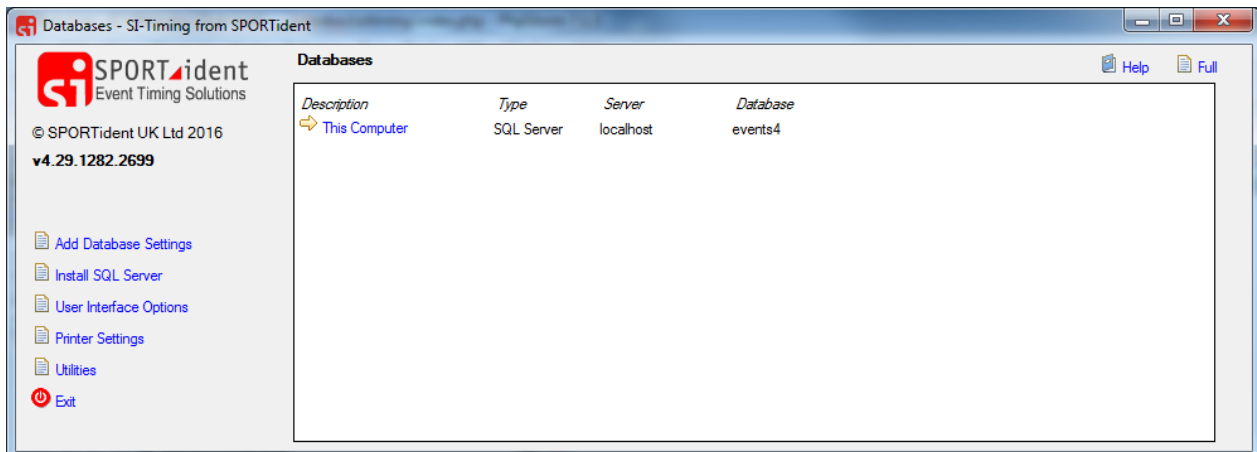


2.3 Database Settings

1. Start SiTiming
2. Click 'Add Database Settings' option on the navigation menu
3. The Data Client is **SQL Server**.
4. The **Server** is the name of the computer your database is installed on. If it is on this computer you can simply put **localhost**.
5. The **port** number will be 1433 unless you have chosen a different port (NB if you are using a firewall on your server computer you must allow this port through - if you are experiencing problems try disabling the firewall to see if it works).
6. If you want to create a new **database** on your database server for SiTiming (recommended) then enter the database name you want (e.g. **events4**) and SiTiming will ask you if you want to create it. Alternatively if you have already set-up a database then simply type its name in. SiTiming and AutoDownload databases have different structures. **If your computer has previously been used with AutoDownload you will need to create a new database and it with therefore need a new name!**
7. Tick "This database does not exist..." if it is a new database as oppose to setting up a connection to an existing database.
8. The **username** should be **sa** unless you have set-up an alternative,
9. The **password** is the one you put in when you installed the database.
10. The **description** is optional. When you connect to multiple databases it can be used as a more user friendly way of identifying different databases.
11. Click **Save** when done



12. On saving you will be taken to the Databases screen. Click on your database to enter



13. To start using the database you will need to enter your licence key by clicking the "Licensing" option on the navigation panel on the "Event List" screen.

14. Add a new key by type (**copy/paste is best!**) the licence key you have been given and the name of your club/organisation exactly as you submitted it when you got your licence.
15. Once you have entered the details click "Save". If you have entered the key correctly a pop-up box will let you know. Then click "Up" in the navigation panel to take you back to the event list screen.

You are now ready to use SiTiming. Follow the on screen help and download the SiTiming User Guide <http://www.sportident.co.uk/sitiming/SiTimingGuide.pdf> to understand what SiTiming can do for you.

STEP 4 – SPORTident ConfigPlus and SPORTident USB Drivers

Please visit <http://www.sportident.co.uk/downloads/index.php> where you can download and install ConfigPlus the utility for programming SPORTident stations.

If you have not used a SPORTident Download Masterstation on the computer before, you also need to install the correct SPORTident USB driver for your computer before you can download SI-Cards. The driver can be installed as part of the ConfigPlus installation, just select the option as you go through the set-up.

STEP 5 – Epson TM Splits Printer Drivers

If you have an Epson TM-T88 Splits Printer which has not been used on the computer before, please visit <http://www.sportident.co.uk/downloads/index.php> where you can download and install the latest Epson TM Driver. Please install the drivers for **3 Epson Splits Printers** we provide. During installation, there is a **Printer Add** screen where you select the each printer driver one by one. The printer we currently recommend is the TM-T88V. If you will be hiring equipment from us you show add the:

- TM-T90 Receipt
- TM-T88IV Receipt
- TM-T88V Receipt

As you add each printer to the list, use the Port Type of **Create a USB Port**.

Trouble Shooting

Please refer to the **SQL Server and Network Troubleshooting Guide** available from <http://www.sportident.co.uk/sitiming/> for detailed help.

Problem: Windows XP machines. As part of the SQL Server Express 2005 install you get an error message saying 'MSXML 6 SP2 failed to install'. Because MSXML is system-protected under Windows XP SP3 it cannot be uninstalled via add/remove programs.

Solution: Microsoft did provide a cleanup utility which solved this problem but it is no longer officially available; please contact us for further advice.

Problem: Cannot connect to a SQL Server Express database on another computer

Solution: Check the following:

- Have you enabled port 1433 by adding it as an exception in the firewall on the computer which has the database?