

Remote Data Collection

SI-GSM and ROC (Raspberry Pi). This document covers collecting the data into SiTiming but not the setting up of the devices on the web sites.

Configuration

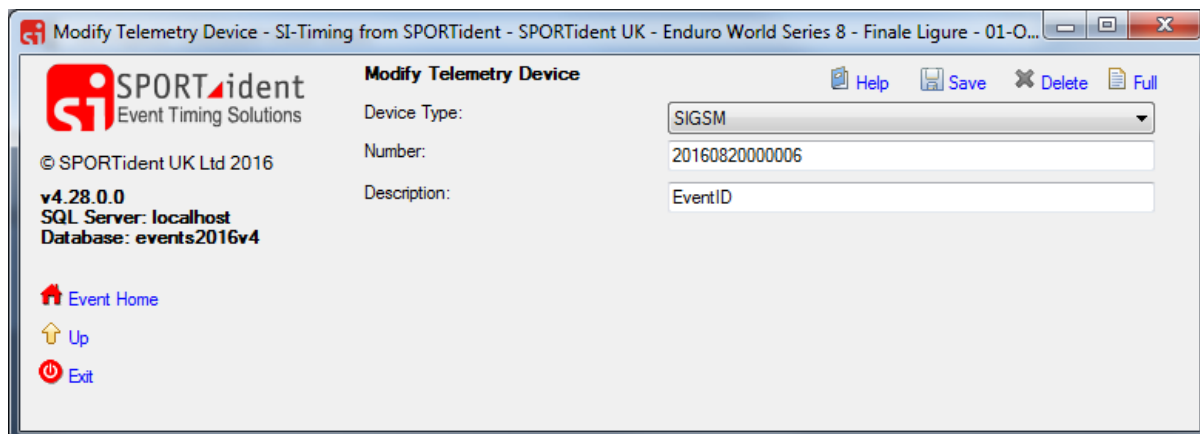
For both sources the devices need to be set-up in SiTiming

Event Overview >> Data Collection >> Collect Punches >> Telemetry Devices >> Add Telemetry Device

SI-GSM

These are set up on SPORTident GmbH's website at an event level not an individual device level. Multiple devices can be linked to a single event.

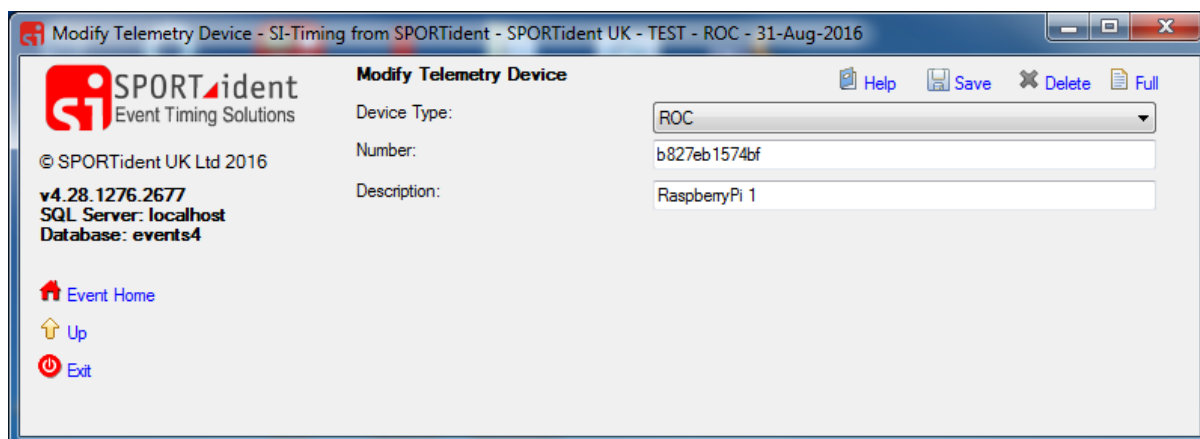
In SiTiming the event ID should be entered in the Number field.



ROC

Raspberry Pi devices need to be set-up on the ROC website.

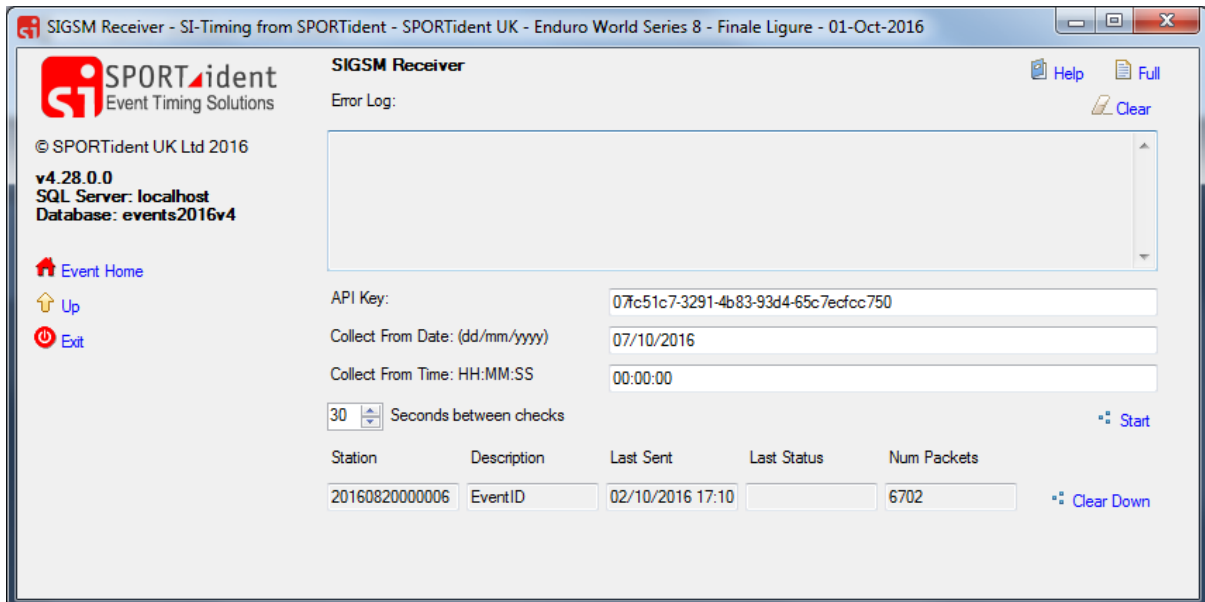
In SiTiming the Unit ID should be entered in the Number field. You need to add a device for every Raspberry Pi you are using.



Collecting Data

SI-GSM

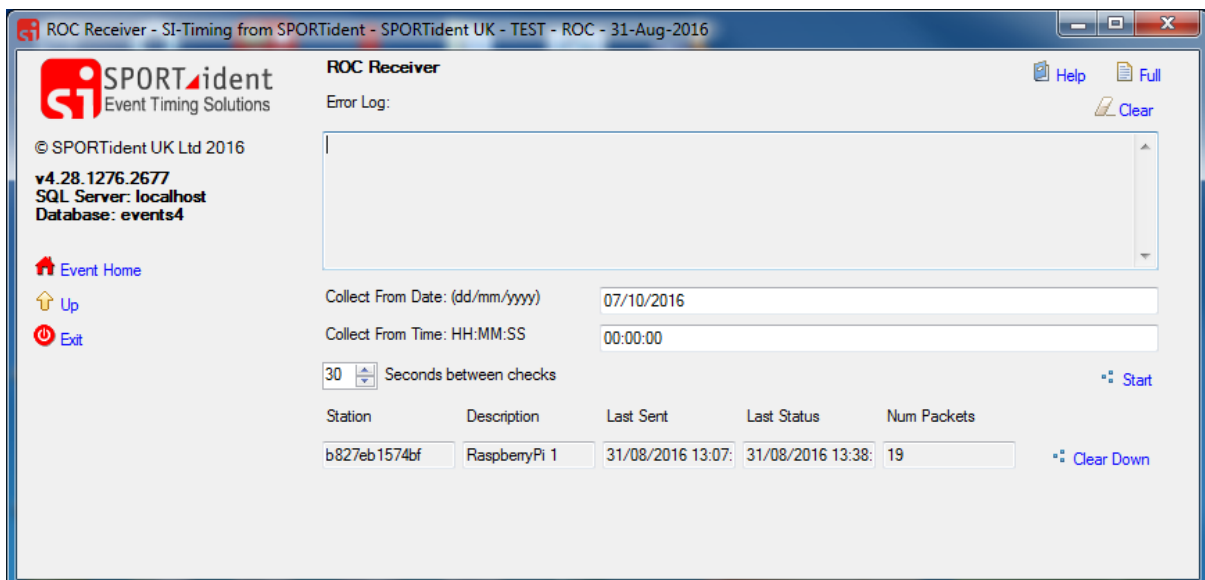
Event Overview >> Data Collection >> Collect Punches >> SIGSM Receiver



Enter your API Key and collection parameters and then "Start". If set-up correctly you should see the Last Sent and Num Packets increase.

ROC

Event Overview >> Data Collection >> Collect Punches >> ROC Receiver



Enter your collection parameters and then "Start". If set-up correctly you should see the Last Sent, Last Status and Num Packets increase.