

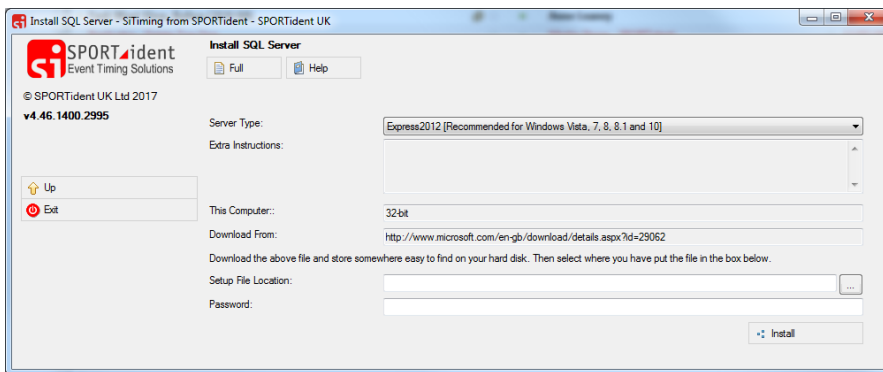
# Installing SQL Server Outside of SiTiming

We strongly recommend that SQL Server is installed from within the SiTiming application. This ensures that the correct default settings are made as part of the install process.

However if you are struggling it is possible to install the software outside SiTiming. The following is an example of installing SQL Server 2012.

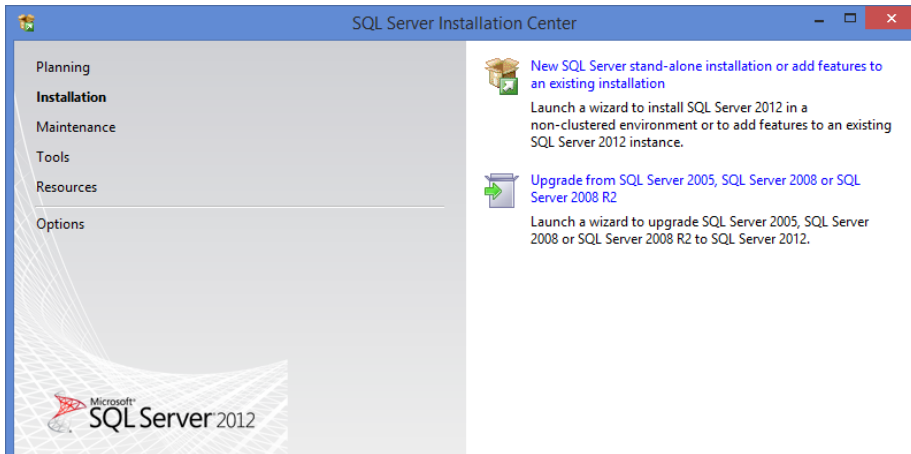
1. Download the SQL Server software

A link to correct/recommended version to download can be found on:  
*Databases >> Install SQL Server*



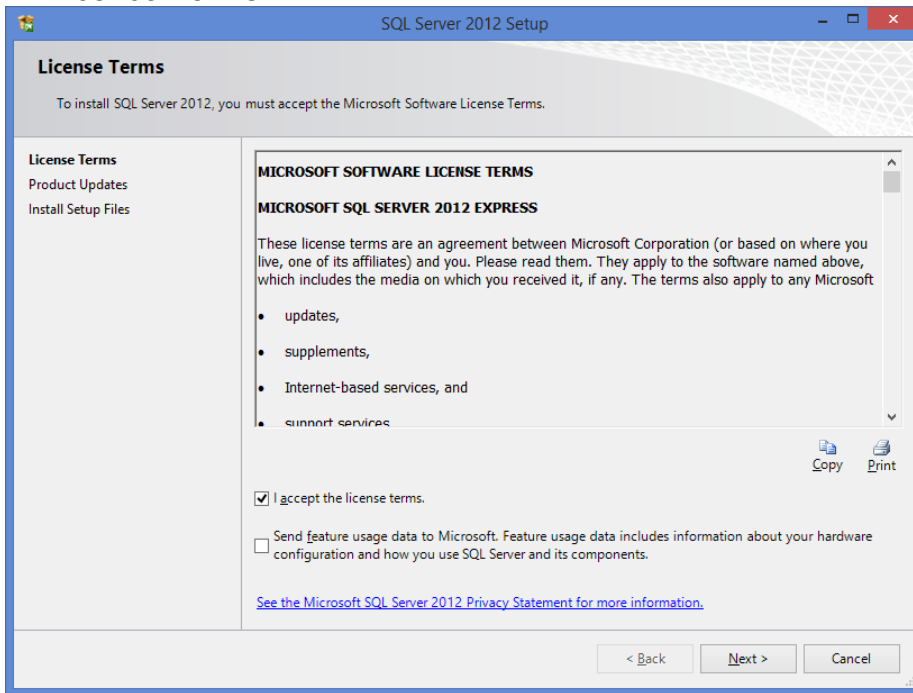
2. Once downloaded double click to install

3. Installation



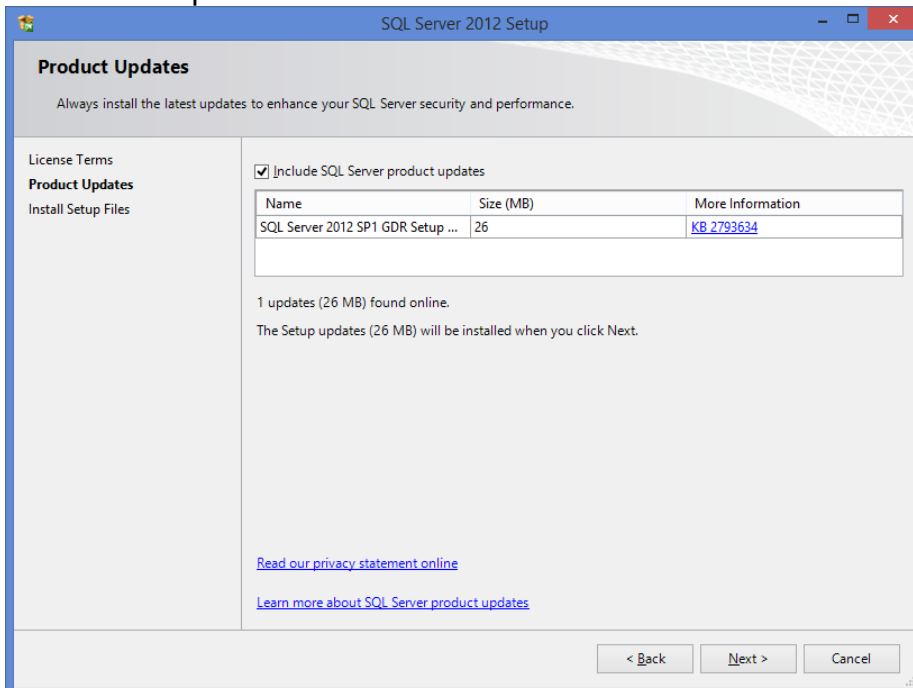
Click on “New SQL Server stand-alone installation...”

#### 4. Licence Terms



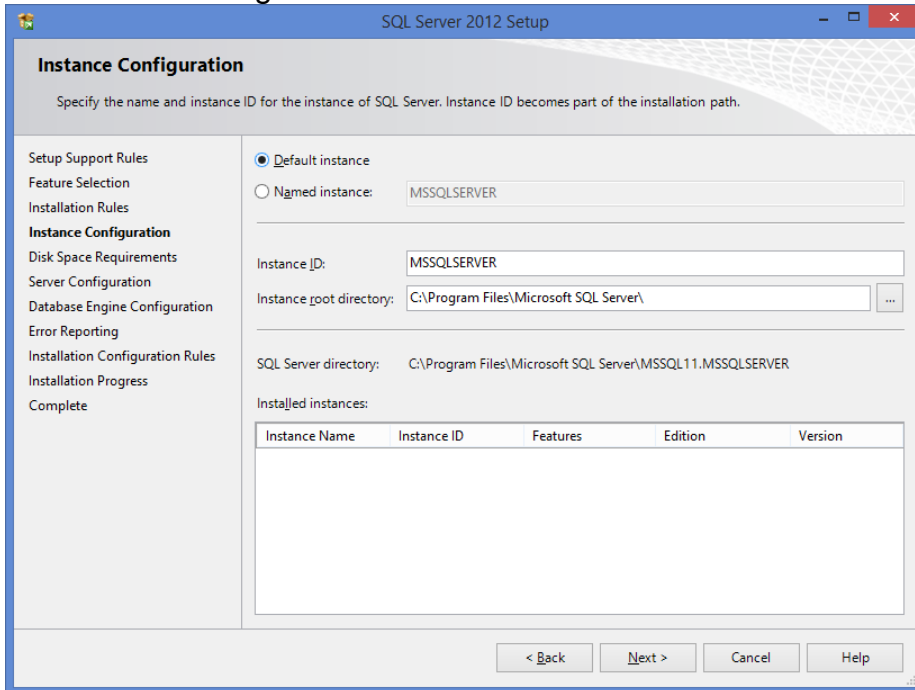
Tick to accept terms and “Next”

#### 5. Product Updates



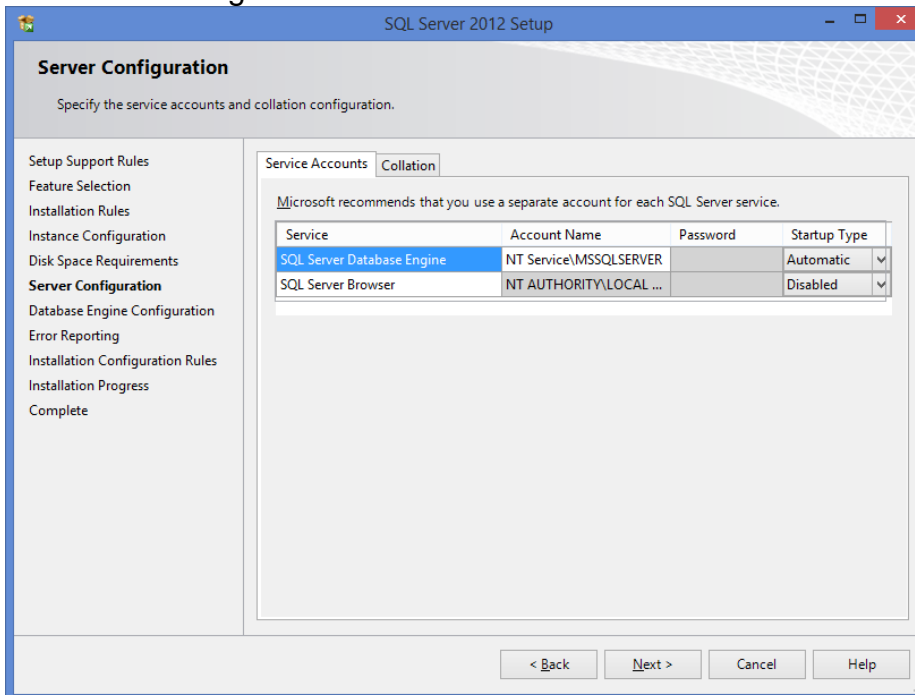
“Next”

## 6. Instance Configuration



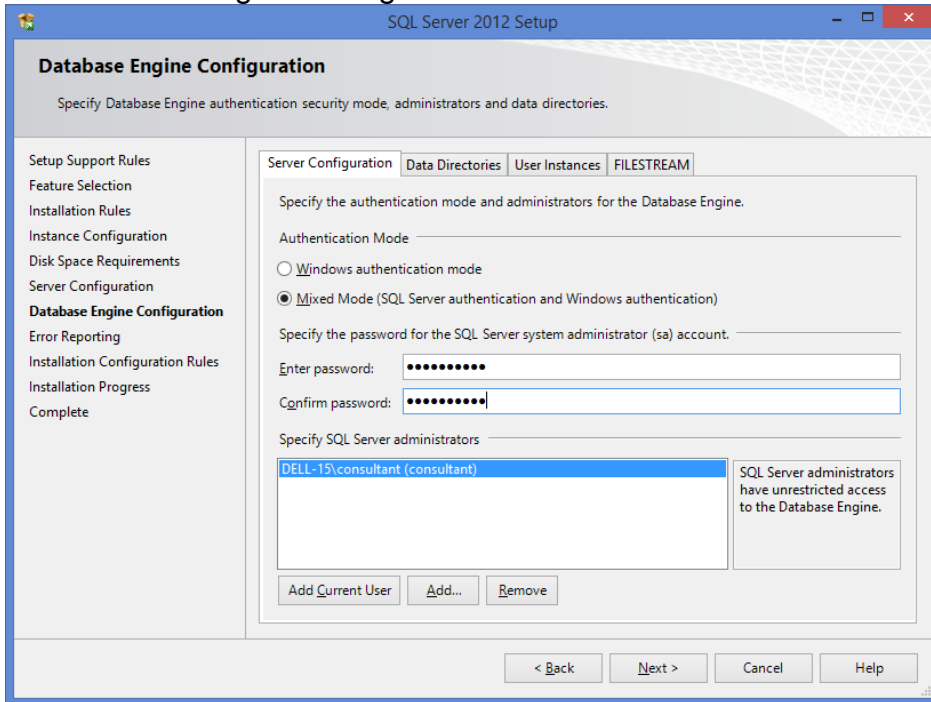
Change to “Default instance”, “Next”

## 7. Server Configuration



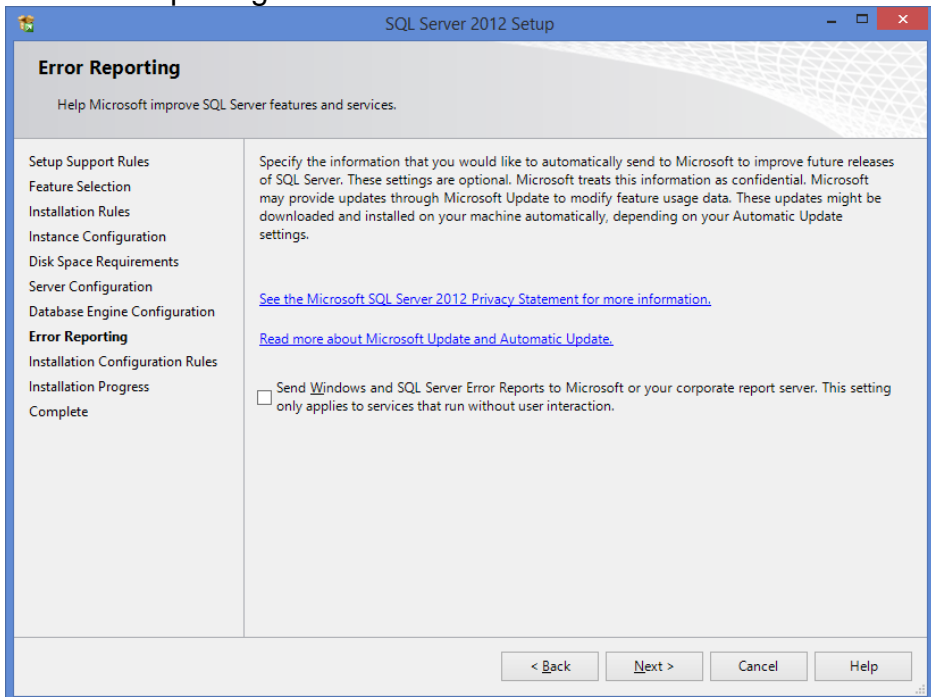
“Next”

## 8. Database Engine Configuration



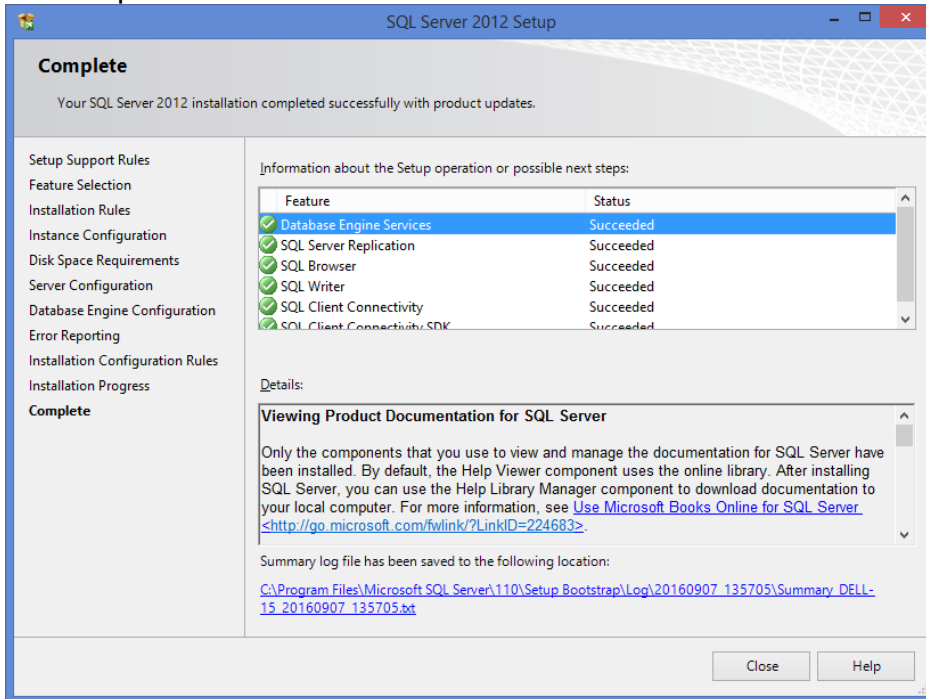
Change to “Mixed Mode” and enter password (for user sa) Don’t forget it!, “Next”

## 9. Error Reporting



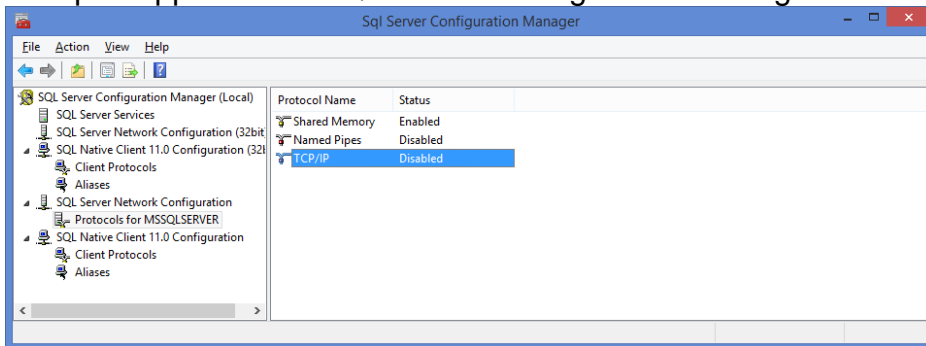
“Next”

### 10. Complete

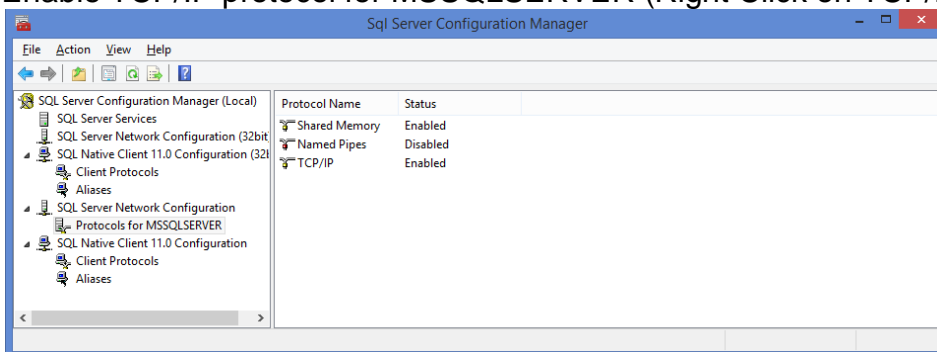


Success!

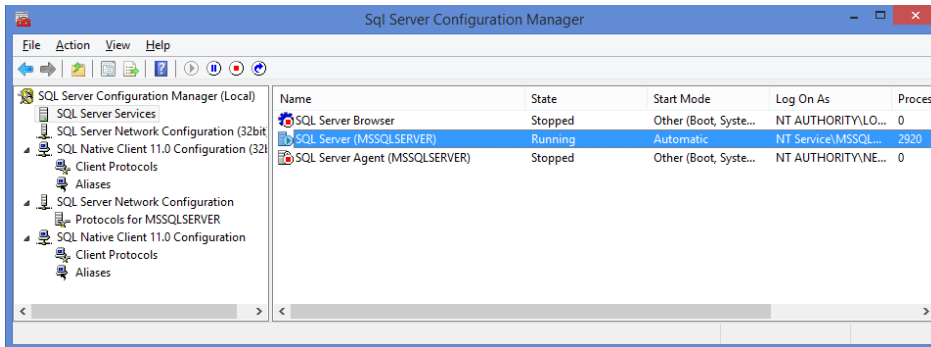
### 11. Open application - SQL Server Configuration Manager



Enable TCP/IP protocol for MSSQLSERVER (Right Click on TCP/IP)

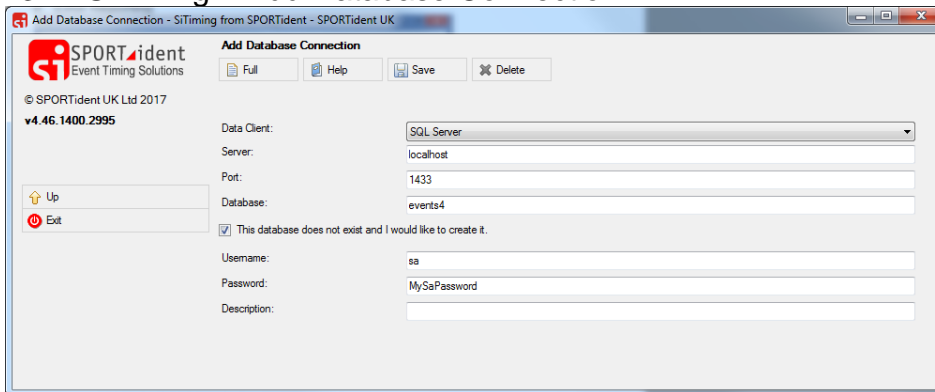


## 12. Restart Service



Right Click on “SQL Server (MSSQLSERVER)” to restart.

## 13. In SiTiming – Add Database Connection



“Save”

14. Click on Database and then click “Yes” when prompted.